
House of the Dead 4 Monitor Installation

This game is provided with either a 52" or 62" monitor dependant upon the model purchased. At least 2 people are required to perform the installation. The footnotes you see, refer to parts shown on the last page of the instructions.

Start the assembly by joining the front and rear sections of the game. (Figure 1) When the two sections are aligned, feed the video cable through the cabinet from the game board to the rear cabinet then up through the hole in the platform where the monitor will rest.. Next connect the harnesses extending from the front cabinet to the rear cabinet as shown in Figure 2.

When the harnesses are connected, join the two halves together by inserting the U-Brackets of the rear into the slots of the front cabinet. The front cabinet may require lifting to properly align the brackets with the slots.

After the halves are joined together, install the 8 tamper proof bolts and washers, 4 in each side of the cabinet to secure the 2 halves. (Figure 3) *Note- hardware is generally provided in the location where it is to be installed. (Also check parts bag)*

Once secured, lower all the leg levelers to the floor to help prevent the game from moving as additional operations are performed. Figure 4

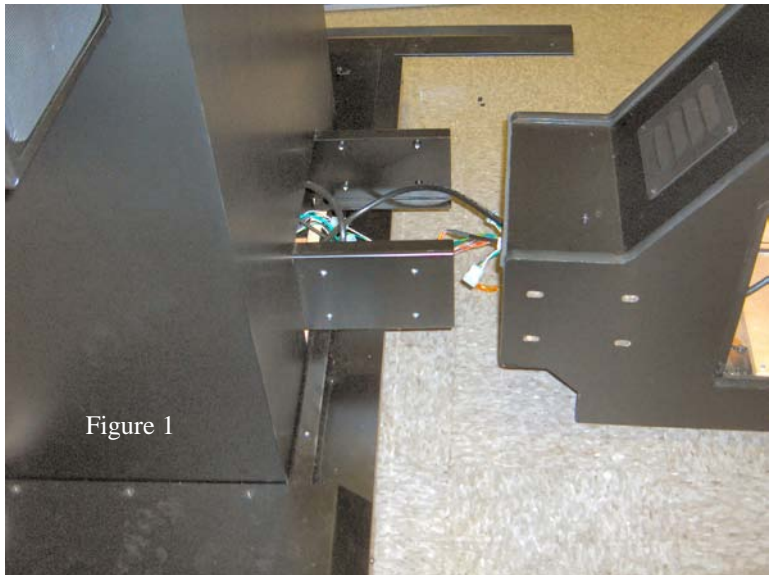


Figure 1

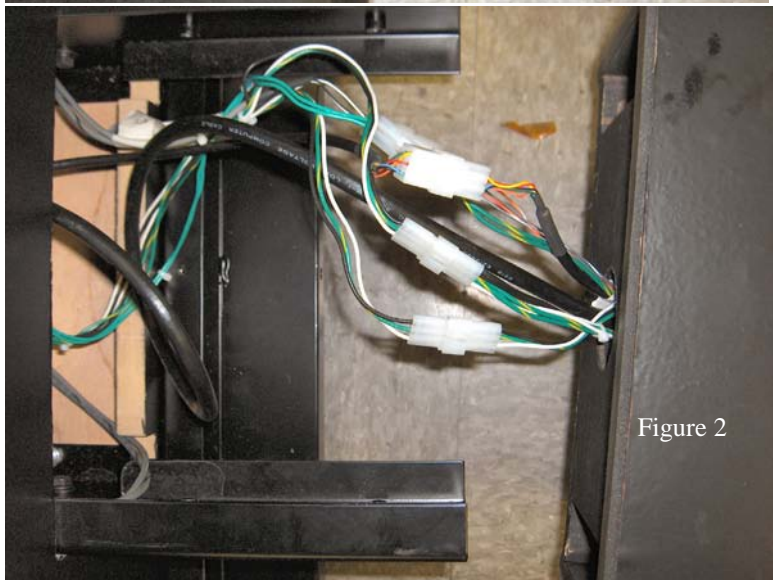


Figure 2

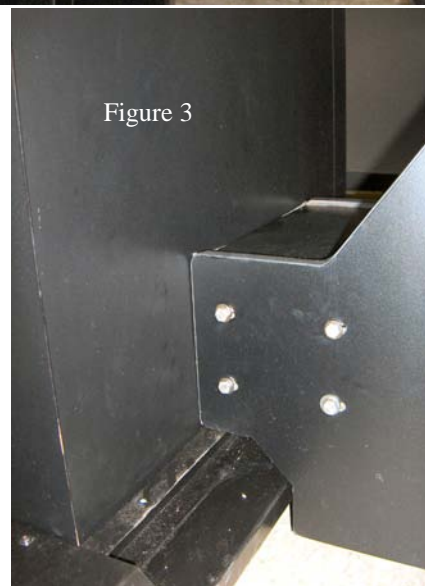
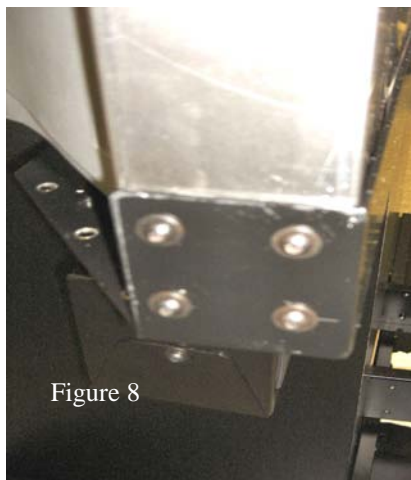
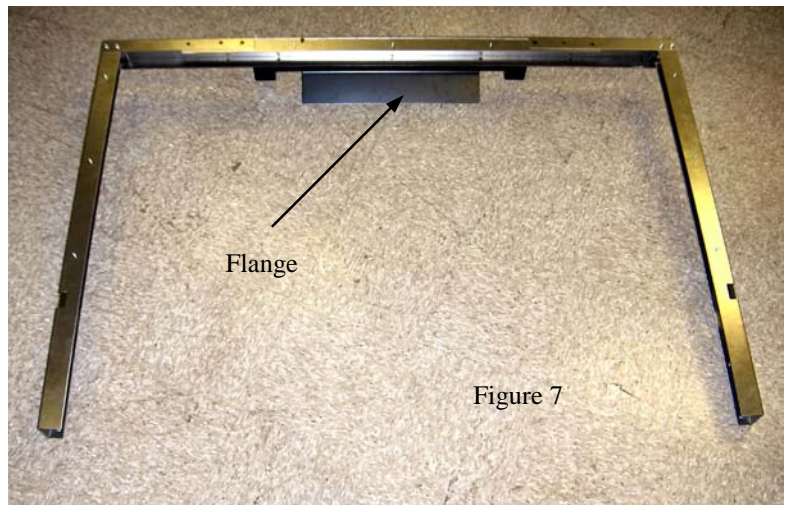
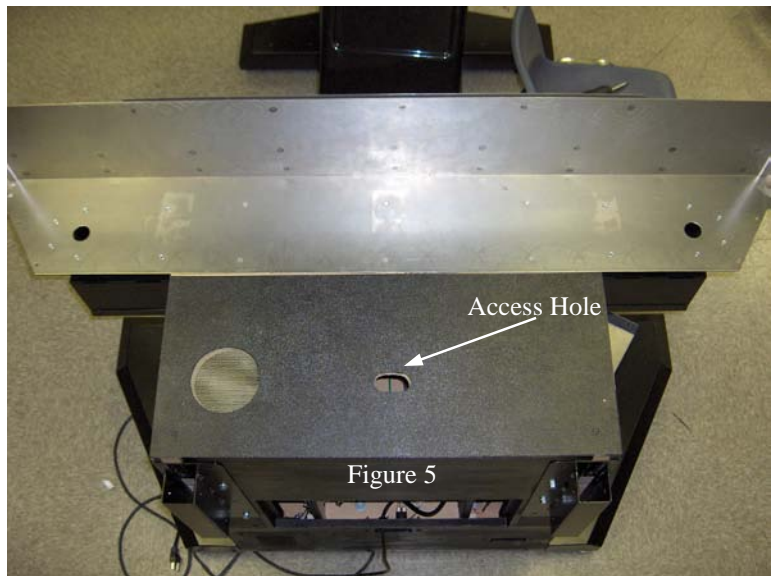


Figure 3



Figure 4

After the game is joined and stabilized, using two people, place the monitor on top of the platform shown (Figure 5) with the screen side of the monitor up against the metal bracket₁. The access hole shown, is used for the line cord from the monitor and the video cable that connects the monitor to the game board. When the monitor is on the platform (Figure 6) feed the line cord and video cable through the access hole. Connect the line cord to the receptacle provided on the filter board below and connect the video harness to the appropriate connector. When connecting the video cable, use position RGB on the 52" monitor and HDMI 1 on the 62" monitor. Next, assemble the three monitor side protector brackets₂ as shown in Figure 7. Add the weldment marquee support₃. When completed, slide the assembly over the monitor with the flange of the support facing the rear and secure the assembly to the base bracket on the pedestal using the four 1/4-20 X 1/2" tamper proof bolts on each side (Figure 8). *Note: the appearance of the various monitor brackets varies slightly from the 62 inch model to the 52 inch model monitor.*



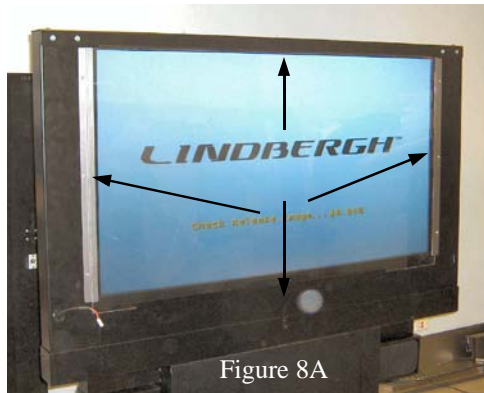


Figure 8A



Figure 9

Install the Plexiglas shield₄ and its retaining strips₅ on the monitor side protectors₆(Figure 8A). Locate the rectangular tubing₇ (Figure 9) in the packaging and install them in each of the two rectangular brackets₈ in the rear of the game (Figure 10) using the $\frac{1}{4}$ -20 X $\frac{3}{4}$ " tamper-proof bolts with washers and lock washers. *Warning: The tube with the cable inside should be mounted on the players right.* Note: when using the 62" monitor that the brackets₈ holding the tubes are in the upper position as shown in Figure 10. When used with a 52" monitor the brackets₈ are placed in the lower position as indicated by the light patch on the sample cabinet shown. When installed, the tubing should appear as in Figures 11 and 12.

The upper part of the tubes should arc over the top of the monitor in preparation for the marquee installation. Next, connect the weldment marquee support₉ on the monitor to the two tubes as shown in Figure 12 Using two $\frac{1}{4}$ -20 X $\frac{3}{4}$ " tamper-proof bolts with washers and lock washers per tube.

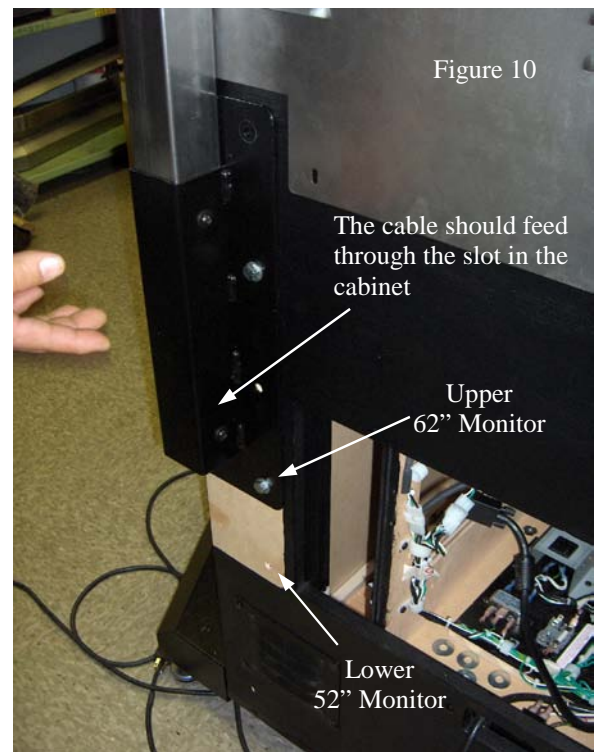


Figure 10

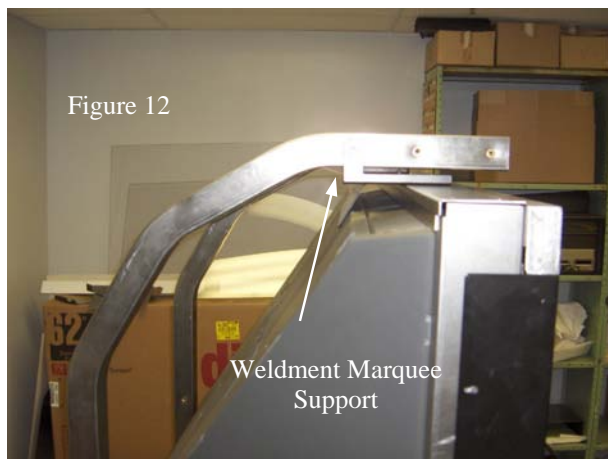


Figure 12



Figure 11

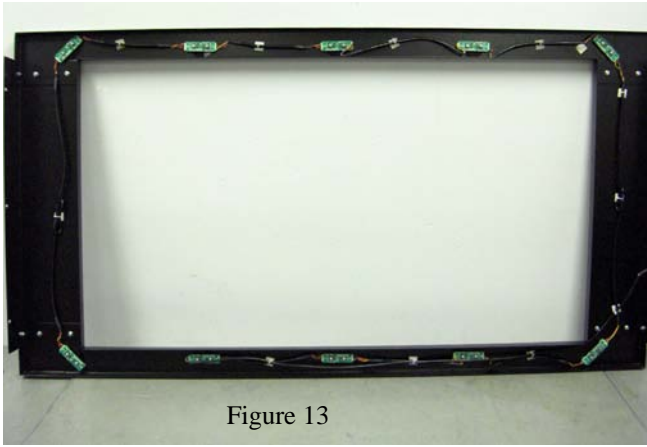


Figure 13

Connect the Mask assembly (Figure 13) to the monitor using the attached hardware. Be careful to connect the plug (Figure 14) on the left side of the mask prior to securing the mask assembly to the monitor.

Next, attach the left and right monitor corner brackets₁₀ (Figure 15) using the hardware provided 10-32 X 1/2 " tamper-proof screws, washers and lock washers (*Note: the brackets shown, are for the 62" monitor, the appearance of these brackets is different for the 52" model.*)

When the corner brackets₁₀ are mounted on both sides, install the monitor rear cover₁₁ to the tubes using 1/4-20 X 3/4 " bolts washers and lock washers and secure the cover to the base cabinet using 8-32 X 1 1/4 " tamper-proof screws, washers and lock washers (Figure 16). Again, the 62" monitor cover plate₁₁ is shown, the 52" model is slightly different in appearance .

The next step is the marquee installation.

Remove the marquee plate₁₂ (artwork) from the marquee assembly by extracting the 5 screws and decorative washers on the top of the assembly. (Figure 17).

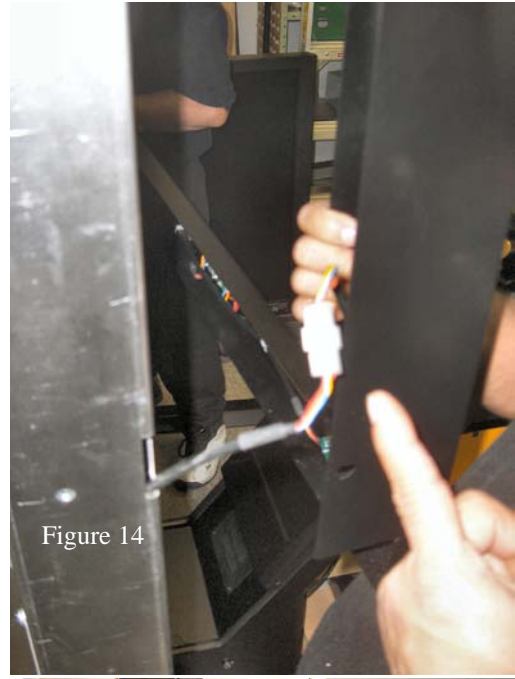


Figure 14



Figure 15

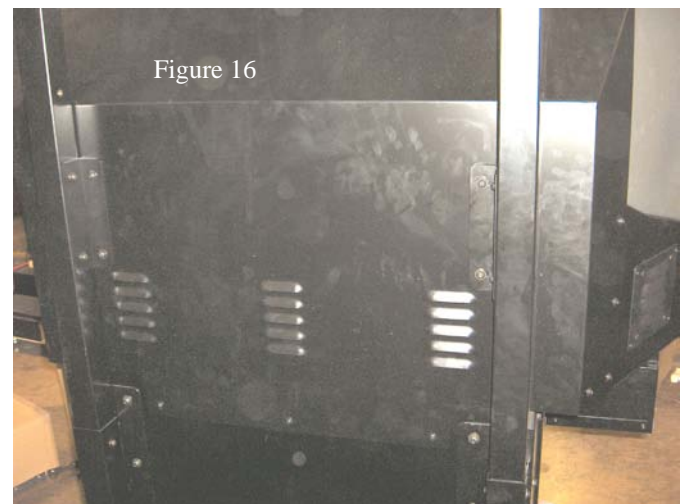


Figure 16

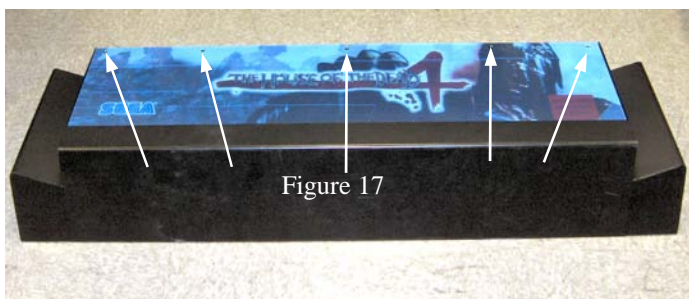


Figure 17



Figure 18

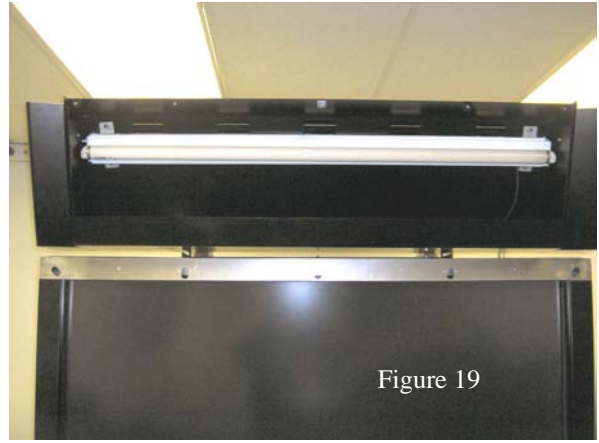


Figure 19

Using at least two people and step ladders, guide the marquee assembly onto the weldment marquee support₃, by inserting the two rectangular tubes₇ through the rear of the marquee (Figure 18). When the assembly is fully seated, the mounting holes inside the marquee should align with the holes on the tubes₇. (Figures 19 & 20). Install $\frac{1}{4}$ -20X $\frac{3}{4}$ " bolts and flat washers and lock washers to secure each side of the marquee to its respective tube₇ (Figure 20) Eight bolts total, four in each tube.

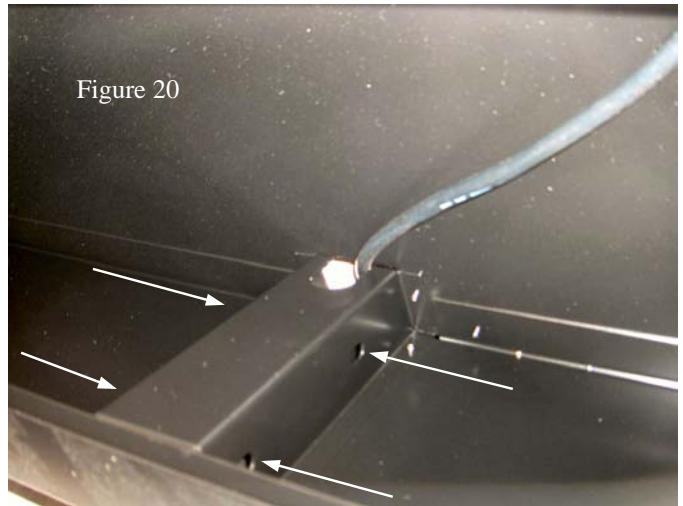


Figure 20

When the marquee is secured, feed the fluorescent power cord up through the hole on the top of the tube and connect to the 3 pin housing on the fluorescent fixture's harness (Figure 20). Next, connect the housing located on the lower end of the tube₇, to the 3 pin plug in the lower cabinet (Figure 21).

Remove the plastic film from the marquee plate and re-install the plate in the assembly using the screws and decorative washers you removed earlier. (Figure 22)

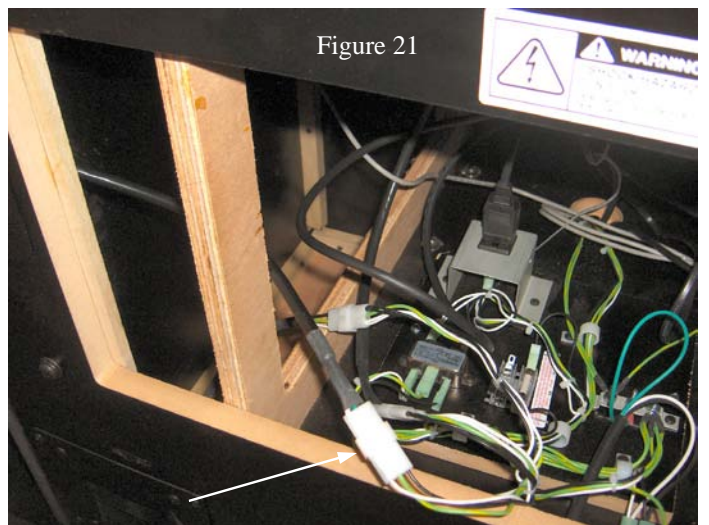


Figure 21



Figure 22

Footnote part number references, sorted by order of appearance in the instructions.

Foot- notes	Bill of material description	Part Number 52" monitor	Part Number 62" monitor
1	Weldment, front monitor support	S254-032-000	S255-015-000
2	Bracket monitor retainer Left/Right	S254-138-00L S254-138-00R	S255-105-00L S255-105-00R
	Weldment, monitor retainer cap	S254-042-000	S255-022-000
3	Weldment, marquee support	S254-045-000	S255-026-000
4	Glass, Monitor	S254-502-000	S255-500-000
5	Bracket, Glass channel	S254-142-000	S254-142-000
6	Bracket monitor retainer Left/Right	Same as #2 Same as #2	Same as #2 Same as #2
7	Tube, Marquee struts	S254-124-000	S254-124-000
8	Weldment, Marquee support L/R	S254-028-00L S254-028-00R	S254-028-00L S254-028-00R
9	Weldment, marquee support	S254-045-000	S255-026-000
10	52" Bracket side trim L/R 62" Weldment, Cover side screened Left/ Right	S254-158-00L S254-158-00R	S255-019-00L S255-019-00R
11	Weldment, Rear monitor	S254-035-000	S255-018-000
12	Billboard plate	S254-501-000	S254-501-000